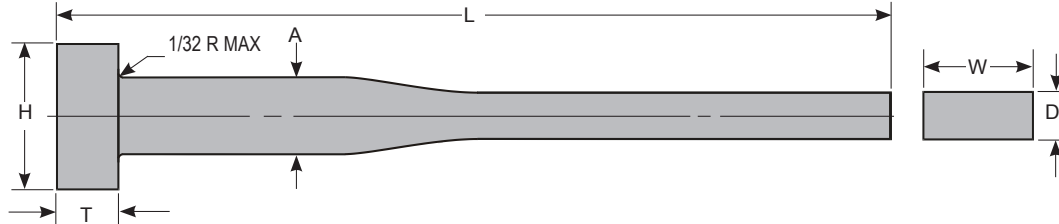


Standard Ejector Blades - Inch

- Surface & Core Hardness: 50 - 52 Rc
- Material: Hot Work Tool Steel (H13)
- Blades are etched for identification
- Standard Metric DIN sizes also available
- **Corner Radius on all edges available**

TOLERANCES	
W	+0.000 -0.003
A	+0.000 -0.001
H	+0.000 -0.010
T	+0.000 -0.002
D	+0.0000 -0.0003
L	+0.062 -0.000



W	A	H	T	D	BLADE LENGTH	L OVERALL LENGTH								
						5"	6"	6-3/8"	7-3/8"	8"	8-3/8"	9-3/8"	10-3/8"	
.100	.125	1/4	1/8	.024	4-3/8		BE9-2446							
				.032	3	BE9-3235	BE9-3236							
				.032	4-3/8			BE9-3246	BE9-3247					
				.046	3	BE9-4635	BE9-4636							
				.046	4-3/8			BE9-4646	BE9-4647					
.140	.156	9/32	5/32	.024	4-3/8			BE11-2446						
				.032	3		BE11-3236			BE11-3238				
				.032	4-3/8			BE11-3246	BE11-3247		BE11-3248			
				.046	3		BE11-4636			BE11-4638				
				.046	4-3/8			BE11-4646	BE11-4647		BE11-4648			
.172	.187	3/8	3/16	.024	4-3/8			BE13-2446						
				.032	3		BE13-3236			BE13-3238				
				.032	4-3/8			BE13-3246	BE13-3247		BE13-3248			
				.046	3		BE13-4636			BE13-4638				
				.046	4-3/8			BE13-4646	BE13-4647		BE13-4648			
				.062	3		BE13-6236			BE13-6238				
				.062	4-3/8			BE13-6246	BE13-6247		BE13-6248			
.234	.250	7/16	3/16	.032	3	BE17-3235	BE17-3236			BE17-3238				
				.032	4-3/8			BE17-3246	BE17-3247		BE17-3248	BE17-3249	BE17-32410	
				.046	3	BE17-4635	BE17-4636			BE17-4638				
				.046	4-3/8			BE17-4646	BE17-4647		BE17-4648	BE17-4649	BE17-46410	
				.062	3	BE17-6235	BE17-6236			BE17-6238				
				.062	4-3/8			BE17-6246	BE17-6247		BE17-6248	BE17-6249	BE17-62410	
.296	.312	1/2	1/4	.032	4-3/8			BE21-3246	BE21-3247		BE21-3248	BE21-3249	BE21-32410	
				.046	4-3/8			BE21-4646	BE21-4647		BE21-4648	BE21-4649	BE21-46410	
				.062	4-3/8			BE21-6246	BE21-6247		BE21-6248	BE21-6249	BE21-62410	
				.078	4-3/8			BE21-7846	BE21-7847		BE21-7848	BE21-7849	BE21-78410	
.359	.375	5/8	1/4	.032	4-3/8			BE25-3246	BE25-3247		BE25-3248	BE25-3249	BE25-32410	
				.046	4-3/8			BE25-4646	BE25-4647		BE25-4648	BE25-4649	BE25-46410	
				.062	4-3/8			BE25-6246	BE25-6247		BE25-6248	BE25-6249	BE25-62410	
				.078	4-3/8			BE25-7846	BE25-7847		BE25-7848	BE25-7849	BE25-78410	
.484	.500	3/4	1/4	.062	4-3/8			BE33-6256	BE33-6257		BE33-6258	BE33-6259	BE33-62510	
				.078	4-3/8			BE33-7856	BE33-7857		BE33-7858	BE33-7859	BE33-78510	

Standard Ejector Blades - Inch

CATALOG NO.	ITEM DESCRIPTION	LIST PRICE
BE9-2446	BLADE: .024 X .100 X 4 3/8 IN	\$25.00
BE9-3235	BLADE: .032 X .100 X 3 IN LONG	\$25.00
BE9-3236	BLADE: .032 X .100 X 3 IN LONG	\$25.00
BE9-3246	BLADE: .032 X .100 X 4 3/8 IN	\$25.00
BE9-3247	BLADE: .032 X .100 X 4 3/8 IN	\$25.00
BE9-4635	BLADE: .046 X .100 X 3 IN LONG	\$25.00
BE9-4636	BLADE: .046 X .100 X 3 IN LONG	\$25.00
BE9-4646	BLADE: .046 X .100 X 4 3/8 IN	\$25.00
BE9-4647	BLADE: .046 X .100 X 4 3/8 IN	\$25.00
BE11-2446	BLADE: .024 X .140 X 4 3/8 IN	\$27.00
BE11-3236	BLADE: .032 X .140 X 3 IN LONG	\$27.00
BE11-3238	BLADE: .032 X .140 X 3 IN LONG	\$27.00
BE11-3246	BLADE: .032 X .140 X 4 3/8 IN	\$27.00
BE11-3247	BLADE: .032 X .140 X 4 3/8 IN	\$27.00
BE11-3248	BLADE: .032 X .140 X 4 3/8 IN	\$27.00
BE11-4636	BLADE: .046 X .140 X 3 IN LONG	\$27.00
BE11-4638	BLADE: .046 X .140 X 3 IN LONG	\$27.00
BE11-4646	BLADE: .046 X .140 X 4 3/8 IN	\$27.00
BE11-4647	BLADE: .046 X .140 X 4 3/8 IN	\$27.00
BE11-4648	BLADE: .046 X .140 X 4 3/8 IN	\$27.00
BE13-2446	BLADE: .024 X .172 X 4 3/8 IN	\$29.00
BE13-3236	BLADE: .032 X .172 X 3 IN LONG	\$29.00
BE13-3238	BLADE: .032 X .172 X 3 IN LONG	\$29.00
BE13-3246	BLADE: .032 X .172 X 4 3/8 IN	\$29.00
BE13-3247	BLADE: .032 X .172 X 4 3/8 IN	\$29.00
BE13-3248	BLADE: .032 X .172 X 4 3/8 IN	\$29.00
BE13-4636	BLADE: .046 X .172 X 3 IN LONG	\$29.00
BE13-4638	BLADE: .046 X .172 X 3 IN LONG	\$29.00
BE13-4646	BLADE: .046 X .172 X 4 3/8 IN	\$29.00
BE13-4647	BLADE: .046 X .172 X 4 3/8 IN	\$29.00
BE13-4648	BLADE: .046 X .172 X 4 3/8 IN	\$29.00
BE13-6236	BLADE: .062 X .172 X 3 IN LONG	\$29.00
BE13-6238	BLADE: .062 X .172 X 3 IN LONG	\$29.00
BE13-6246	BLADE: .062 X .172 X 4 3/8 IN	\$29.00
BE13-6247	BLADE: .062 X .172 X 4 3/8 IN	\$29.00
BE13-6248	BLADE: .062 X .172 X 4 3/8 IN	\$29.00
BE17-3235	BLADE: .032 X .234 X 3 IN LONG	\$32.00
BE17-3236	BLADE: .032 X .234 X 3 IN LONG	\$32.00
BE17-3238	BLADE: .032 X .234 X 3 IN LONG	\$32.00
BE17-32410	BLADE: .032 X .234 X 4 3/8 IN	\$32.00
BE17-3246	BLADE: .032 X .234 X 4 3/8 IN	\$32.00
BE17-3247	BLADE: .032 X .234 X 4 3/8 IN	\$32.00
BE17-3248	BLADE: .032 X .234 X 4 3/8 IN	\$32.00
BE17-3249	BLADE: .032 X .234 X 4 3/8 IN	\$32.00
BE17-4635	BLADE: .046 X .234 X 3 IN LONG	\$32.00
BE17-4636	BLADE: .046 X .234 X 3 IN LONG	\$32.00
BE17-4638	BLADE: .046 X .234 X 3 IN LONG	\$32.00
BE17-46410	BLADE: .046 X .234 X 4 3/8 IN	\$32.00
BE17-4646	BLADE: .046 X .234 X 4 3/8 IN	\$32.00
BE17-4647	BLADE: .046 X .234 X 4 3/8 IN	\$32.00
BE17-4648	BLADE: .046 X .234 X 4 3/8 IN	\$32.00
BE17-4649	BLADE: .046 X .234 X 4 3/8 IN	\$32.00
BE17-6235	BLADE: .062 X .234 X 3 IN LONG	\$32.00

CATALOG NO.	ITEM DESCRIPTION	LIST PRICE
BE17-6236	BLADE: .062 X .234 X 3 IN LONG	\$32.00
BE17-6238	BLADE: .062 X .234 X 3 IN LONG	\$32.00
BE17-62410	BLADE: .062 X .234 X 4 3/8 IN	\$32.00
BE17-6246	BLADE: .062 X .234 X 4 3/8 IN	\$32.00
BE17-6247	BLADE: .062 X .234 X 4 3/8 IN	\$32.00
BE17-6248	BLADE: .062 X .234 X 4 3/8 IN	\$32.00
BE17-6249	BLADE: .062 X .234 X 4 3/8 IN	\$32.00
BE21-32410	BLADE: .032 X .296 X 4 3/8 IN	\$36.00
BE21-3246	BLADE: .032 X .296 X 4 3/8 IN	\$36.00
BE21-3247	BLADE: .032 X .296 X 4 3/8 IN	\$36.00
BE21-3248	BLADE: .032 X .296 X 4 3/8 IN	\$36.00
BE21-3249	BLADE: .032 X .296 X 4 3/8 IN	\$36.00
BE21-46410	BLADE: .046 X .296 X 4 3/8 IN	\$36.00
BE21-4646	BLADE: .046 X .296 X 4 3/8 IN	\$36.00
BE21-4647	BLADE: .046 X .296 X 4 3/8 IN	\$36.00
BE21-4648	BLADE: .046 X .296 X 4 3/8 IN	\$36.00
BE21-4649	BLADE: .046 X .296 X 4 3/8 IN	\$36.00
BE21-62410	BLADE: .062 X .296 X 4 3/8 IN	\$36.00
BE21-6246	BLADE: .062 X .296 X 4 3/8 IN	\$36.00
BE21-6247	BLADE: .062 X .296 X 4 3/8 IN	\$36.00
BE21-6248	BLADE: .062 X .296 X 4 3/8 IN	\$36.00
BE21-6249	BLADE: .062 X .296 X 4 3/8 IN	\$36.00
BE21-78410	BLADE: .078 X .296 X 4 3/8 IN	\$36.00
BE21-7846	BLADE: .078 X .296 X 4 3/8 IN	\$36.00
BE21-7847	BLADE: .078 X .296 X 4 3/8 IN	\$36.00
BE21-7848	BLADE: .078 X .296 X 4 3/8 IN	\$36.00
BE21-7849	BLADE: .078 X .296 X 4 3/8 IN	\$36.00
BE25-32410	BLADE: .032 X .359 X 4 3/8 IN	\$43.00
BE25-3246	BLADE: .032 X .359 X 4 3/8 IN	\$43.00
BE25-3247	BLADE: .032 X .359 X 4 3/8 IN	\$43.00
BE25-3248	BLADE: .032 X .359 X 4 3/8 IN	\$43.00
BE25-3249	BLADE: .032 X .359 X 4 3/8 IN	\$43.00
BE25-46410	BLADE: .046 X .359 X 4 3/8 IN	\$43.00
BE25-4646	BLADE: .046 X .359 X 4 3/8 IN	\$43.00
BE25-4647	BLADE: .046 X .359 X 4 3/8 IN	\$43.00
BE25-4648	BLADE: .046 X .359 X 4 3/8 IN	\$43.00
BE25-4649	BLADE: .046 X .359 X 4 3/8 IN	\$43.00
BE25-62410	BLADE: .062 X .359 X 4 3/8 IN	\$43.00
BE25-6246	BLADE: .062 X .359 X 4 3/8 IN	\$43.00
BE25-6247	BLADE: .062 X .359 X 4 3/8 IN	\$43.00
BE25-6248	BLADE: .062 X .359 X 4 3/8 IN	\$43.00
BE25-6249	BLADE: .062 X .359 X 4 3/8 IN	\$43.00
BE25-78410	BLADE: .078 X .359 X 4 3/8 IN	\$43.00
BE25-7846	BLADE: .078 X .359 X 4 3/8 IN	\$43.00
BE25-7847	BLADE: .078 X .359 X 4 3/8 IN	\$43.00
BE25-7848	BLADE: .078 X .359 X 4 3/8 IN	\$43.00
BE25-7849	BLADE: .078 X .359 X 4 3/8 IN	\$43.00
BE33-62510	BLADE: .062 X .484 X 5 3/8 IN	\$75.00
BE33-6258	BLADE: .062 X .484 X 5 3/8 IN	\$75.00
BE33-6259	BLADE: .062 X .484 X 5 3/8 IN	\$75.00
BE33-78510	BLADE: .078 X .484 X 5 3/8 IN	\$75.00
BE33-7858	BLADE: .078 X .484 X 5 3/8 IN	\$75.00
BE33-7859	BLADE: .078 X .484 X 5 3/8 IN	\$75.00